



RBD-252-24 speed control relay with TYCO929505 6pin connector.

The relay can be connected to the output from the impulse output sensor or at the output of the tachograph D3, B7. The relay closes at a speed of more than 3km / h and switches off at a speed of less than 2.5km / h. When the speed is reduced, the maximum relay delay (relay deactivation) is 1s. The car's speed at which the relay is switched depends on the constant C.

The wagon speed at which the switch is switched on, the relay can be set as desired by the customer. There is no switching, expansion at decision speed (relay speed) on the relay. This unwanted state is avoided by hysteresis that can be set. The relay is also sold under the designation IVECO5801108736.

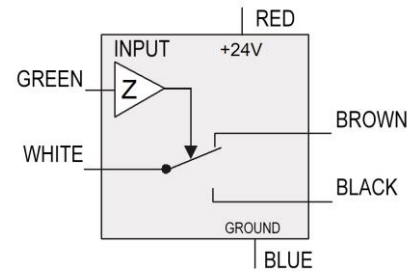
Characteristic data:

Symbol	Parameter	Size			Value
		min.		max.	
U _{CC}	Power voltage	20		32	V
I _{OUT}	Controlled current			7	A
U _{ŠŠ}	Sensor signal with impulse output.	4		32	V
U _{ZK}	Contact-contact test voltage			750	V
R _{IN}	Input resistance		100		kOhm
f _{ON}	The relay switches to frequency			5,5	Hz
f _{OFF}	The relay opens at frequency	4,5			Hz
f _{IN}	Frequency of input signal	0		500	Hz
	Relay type - switching contact (At zero speed - relay open)				
V _{ON}	The relay closes at speed ¹⁾			3	km/h
V _{OFF}	The relay opens at speed ¹⁾	2,5			km/h
t	Operating temperature	-40		85	°C

¹⁾Vehicle constant C=8000

Connection: minimum cable length 0.6m

Red	CYA 0,5	power voltage +24V
Blue	CYA 0,5	minus, skelet
White	CYA 0,5	Common relay output
Black	CYA 0,5	Switching contact
Green	CYA 0,5	Signal input
Brown	CYA 0,5	Expansion contact



Technical drawing: box - white plastic, holder - dural 2L

